

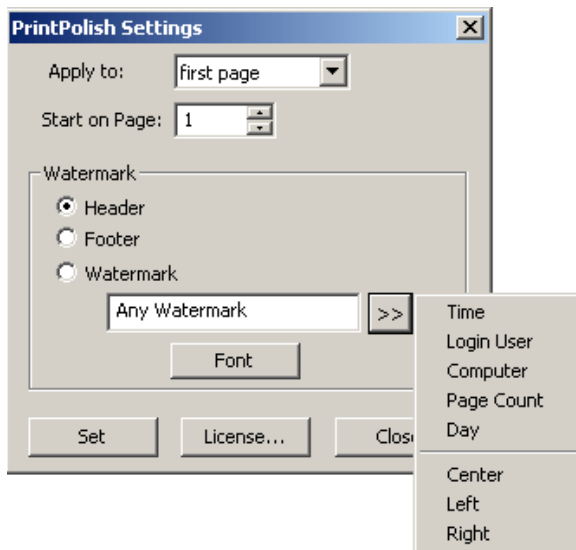
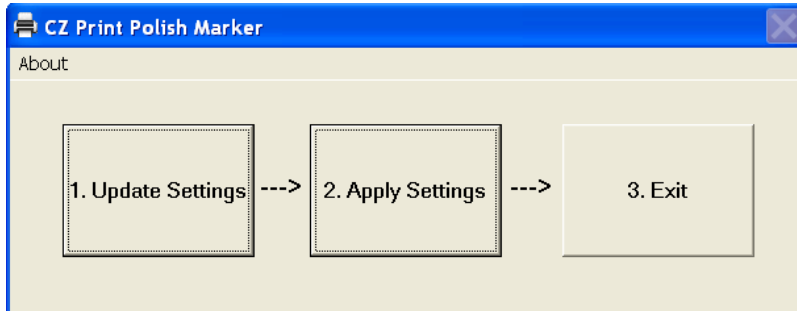
CZ Print Polish Marker – User Guide

With CZ Print Polish Marker 1.0, you can easily force a user name, computer name, day, time and page count to appear on footer or header area of printed document from all your applications. You can also create overlay's and multi-line watermarks and texts on each paper sheet. CZ Print Polish Marker 1.0 lets you control the raw power of your printer and channelize it for better printing needs.

System Requirements	
Operating System	Windows (32-bit and 64-bit)
CPU	300 MH or higher
Memory	256 MB or more
Hard Disk Free Space	10M

In order to install CZ Print Polish Marker, you must have the administrator rights on the installation computer.

1. Double-click CZ Print Polish Marker 32-bit.msi (for Windows 32-bit Operating System) or CZ Print Polish Marker 64-bit.msi (for Windows 64-bit Operating System) and follow the on-screen instructions.
2. Click "Start → All Programs → CZ Solution → CZ Print Polish Marker Settings".
3. Click "Update Settings" to modify settings.
Click "Apply Settings". The settings are saved in the file config.ini in the installation folder of CZ Print Polish Marker e.g. C:\Program Files (x86)\CZ Solution\CZ Print Polish Marker 64-bit\config.ini.
Click button "Exit" to exit.



4. Print a document to test.

Any Header (For Example User Name: eagle)

Easy to Use Print Management Solutions for Business and Education

CZ Solution offers print management solutions for small, medium and large businesses, government, libraries, non-profit organizations, schools and other institutions. With the help of CZ Solution, managers and business owners can take control of printing and copying to save money and more effectively utilize resources.

CZ Print Job Tracker 8.0 This software is designed to help businesses and educational institutions of any size centralize print management. It allows you to control, track, and audit print usage as well as set quotas to reduce printing costs. You can also use it to scan your network and collect printer inventory information including counter, Ink / toner usage, IP address, model, serial number, MAC address.

- Print Counting & Tracking & Accounting
- Print Control & Quotas & Authentication (by PIN) & Rules
- Client Billing by Entering Client Code & Project Code & Job Code
- Printer Status Monitor (Toner Low, Out of Paper...)
- Scan Network to Collect Printer Counter, Ink / Toner Usage, Model, Serial Number and MAC address.
- Save & Archive & View All Printed Documents
- Detail Usage Report by User, Department and Printer

CZ Print Release Station 6.0 For libraries, schools and other institutions with low budgets, the release station allows control over costs by charging fees for each copy. This is an ideal way to have patrons or students pay for their own printing and easily manage the release of documents. Charging for copies prevents wasteful use of resources and helps libraries and schools pay for their printing equipment.

- Automated Hold, Manual Release Print Jobs
- Pay For Printing by Cash-in-Hand Payment, Coins, Cards, Bill or Prepaid
- Pay for Copying by Coins, Cards, Bill or Prepaid
- Secure Printing (by PIN)

CZ Copier Tracking System 2.0 This powerful copy manager and counter simplifies the tracking and administration of copies over an entire network or system. Users can enter a PIN in order to access the copy machine or MFP and administrators can keep track of amounts, issue quotas or even make exceptions for large copy jobs. This system helps businesses reduce copy costs across the entire organization.

- Copy Counting & Tracking & Accounting
- CCopy Control & Quotas & Authentication (by PIN) & Rules
- Client Billing by Entering Code
- Charge Back
- Detail Usage Report by Copier (or MFC)

CZ Print Polish Marker 1.0 This handy tool prints user names, computer time and date on the header or footer of any document from all applications and users can identify their own documents.

Any Footer (For Example Page Number: 1)

Note: You can open config.ini e.g. C:\Program Files (x86)\CZ Solution\CZ Print Polish Marker 64-bit\config.ini to update the parameters directly, then save the file and print a document to test. You can also copy the config.ini to other computers, so you don't need to setup the parameters manually on each computer.

Parameters in Config.ini

```
[Settings]
#Set Header Font Settings
IfH=8----wAAAAAAAAAAAAAAAAALwCAAAAAAAAAwIBElRpbWVzIE5ldyBSb21hbGAAQAAAAiPUSAHgAcABo9xIA
#Set Footer Font Settings
IfF=8----wAAAAAAAAAAAAAAAAALwCAAAAAAAAAwIBElRpbWVzIE5ldyBSb21hbGAAQAAAAiPUSAHgAcABo9xIA
```

#Set Watermark Font Settings
 IfWM=SAAAAAAAAAAAAAAAAAAAAAAAAAALwCAAAAAAAAABAAAAAFRhaG9tYQCAhO1CAAAAAAAAABAAAAxPYSAAckQwA
 ApEMA
#1 – Apply to Each Page; 0 – Apply to First Page
 ApplyPage=1
#Set Start Page e.g. Start from Page 1
 PrintPage=1
Set Header
 Header=Any Header (For Example User Name: <User>)
Set Footer
 Footer=Any Footer (For Example Page Number: <Page>)
 MultiLine=0
Set Watermark
 Watermark=Any Text
Set Watermark Text Color e.g. 12632256 - Silver
 TextColor=12632256
Set Header Text Color e.g. 0 - Black
 TextColorH=0
Set Footer Text Color e.g. 0 - Black
 TextColorF=0
Set Watermark Size
 PointSize=540
Set Header Size
 PointSizeH=100
Set Footer Size
 PointSizeF=100
Set Watermark Rotate by Angle Counterclockwise e.g. 45 Angle
 CustomAngle=45
 BOffset=0
 AlphaBl=100
 Custom=1
Set Watermark First Character X Position
 CustomStartX=25
Set Watermark First Character Y Position
 CustomStartY=55

Uninstall CZ Print Polish Marker

Open Add/Remove Programs, select CZ Print Polish Marker, and click on the Remove button.